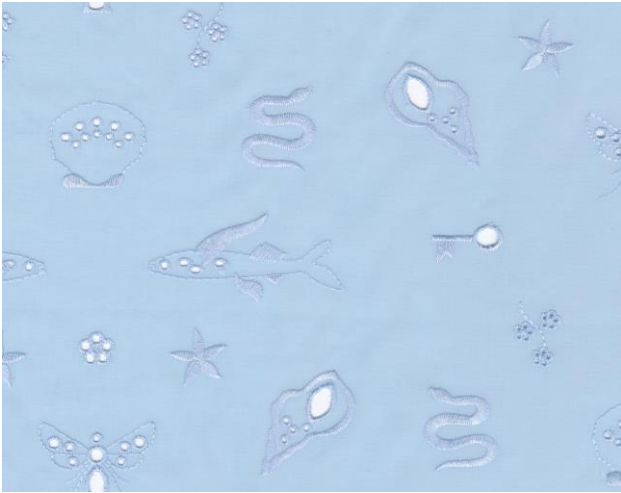


SAHCO

1831



Ketaki

Type: Curtain

Composition: 30% cotton, 56% polyester,
14% recycled polyester

Yarn type: Staple / Filament

Binding: Embroidery

Width: Approx. 140 cm, 55 inches

Weight: Approx. 118 g/lin.m, 4 oz/ly

Repeat: Approx. 27 cm, 6 inches V / 30 cm, 11.8 inches H

Colour difference may occur

Handwash or gentle machine wash 30°C

Drip drying

Ironing might be necessary.

Disinfection, see www.kvadrat.dk

More info: Care and maintenance kvadrat.dk



10^{year}
warranty

Lightfastness

Note 3-6 ISO 105-B02

Quality benefits

Washable

Environmental benefits

Follow the EU Ecolabel dye restrictions incl. AZO dye
and heavy metal restrictions

REACH compliant

Californian Proposition 65 list compliant

LBC Red list compliant

Country of origin

Austria

Launch

2023

Warranty

10 years. See terms and conditions on kvadrat.dk

Kvadrat packaging and cardboard is recyclable. Cardboard
material is FSC certified and / or contains recycled
content.

For further information

www.kvadrat.dk/en/sahco